

# The Pyramid™

## 1 kg pre-filled disposable carbon dioxide absorber

The Pyramid is an easy to use disposable absorber specifically developed for clinical use during anaesthesia to absorb CO<sub>2</sub> within an anaesthetic breathing system. The Pyramid is compatible with the following Draeger® anaesthetic workstations:

- Cicero EM®
- Cato edition®
- Fabius CE®
- Fabius GS®
- Julian®
- Primus®
- Zeus®
- Perseus®

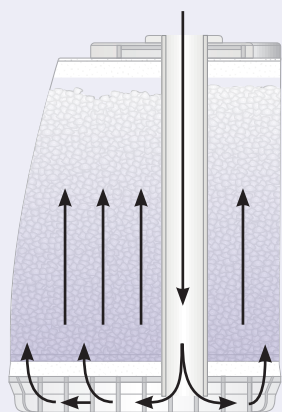
The Pyramid can only be used on the above Draeger workstations if they have been fitted with either the Draeger CLIC® adaptor MX00012 or MX50090

It is essential that the user:

- Follows the instructions for use of the Draeger anaesthetic workstation concerned.
- Refer to the instructions for use supplied with each box of Intersurgical Pyramid absorbers.

## Features and Benefits

**Clip to indicate the correct location** in the MX50090 CLIC adaptor. See Instructions for use.



### Efficient CO<sub>2</sub> absorption.

A gas dispersion chamber at the base of the Pyramid provides optimum flow and dispersion resulting in a better utilization of the soda lime granules and a more visible colour change from the outside.



### An air-tight seal for storage.

The Pyramid is fitted with an air-tight cap to protect the absorbent from moisture and carbon dioxide within the air.

### Fast and easy exchange

The Pyramid enables fast exchange of absorbent without the need for time consuming pouring of loose granules.

### No dust emission

Foam filters ensure that any fine particles or dust are retained within the Pyramid and not allowed to escape into the breathing system or into the atmosphere during handling, providing a safe solution for the user

## Intersurgical absorbents contained within the Pyramid

### Spherasorb™

A unique medical grade soda lime designed specifically for clinical use.



Spherasorb's chemical formulation has been developed specifically to address the potential problems of use within the medical environment.

#### Features and Benefits

**Only 1.5 % Sodium Hydroxide.**

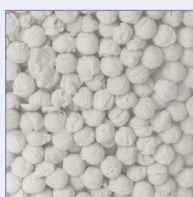
Less than standard Soda Lime

**Zeolite to reduce the risk of drying out.**

No other absorbents contain a zeolite.

**Spherasorb is made of 3-4mm spheres processed to minimise potential dusting and optimise CO<sub>2</sub> absorption.**

Its uniform shape allows hexagonal close packing and therefore, consistent bed packing, resulting in a more even flow of gases through the absorber and therefore, a very efficient absorption of CO<sub>2</sub>.



### LoFloSorb™

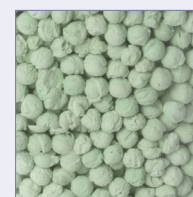
A unique medical grade CO<sub>2</sub> absorbent that contains no Alkali Hydroxide.



LoFloSorb eliminates the risk associated with reactions with volatile anaesthetics.

**LoFloSorb contains no Potassium Hydroxide and no Sodium Hydroxide.**

LoFloSorb eliminates the risk associated with reactions with volatile anaesthetics.



**LoFloSorb is made of 3-4mm spheres processed to minimise potential dusting.**

Its uniform shape allows consistent bed packing, resulting in a more even flow of gases through the absorber.

**LoFloSorb offers a very stable green to violet colour change.**

This eliminates the potential for exhausted product being mistaken for fresh.

Independent tests have shown that Spherasorb's unique formulation significantly reduces the risk of drying out and reaction as well as heat generation with volatile anaesthetic agents. Spherasorb exceeds the requirements of the United States Pharmacopia (USP).

Due to the absence of any Alkali Hydroxide LoFloSorb does not last as long as standard soda limes or Spherasorb. LoFloSorb meets all the requirements of the United States Pharmacopia (USP). Compound A is a breakdown product of Sevoflurane with dry absorbents. Independent tests have demonstrated that LoFloSorb eliminates the risk of reaction with Sevoflurane and other volatile anaesthetics.

## Ordering Information



Code	2191001	2192001	2193001
Box qty.	6	6	6
Absorbent	Spherasorb	Spherasorb	LoFloSorb
Colour change	White to Violet	Pink to White	Green to Violet

Draeger®, Cicero EM®, Cato edition®, Fabius CE®, Fabius GS®, Julian®, Primus®, Zeus®, Perseus®, CLIC® and Infinity® are trademarks of Draeger Medical

ISS.17 NL Issue 2 02.13